

Kelverion

IM for BMC Atrium

BMC Atrium CMDB Smart Discovery Integration for Azure Automation

Integrating with BMC Atrium directly via PowerShell requires you to know upfront exactly what Dataset name, CI Class name, CI Attribute names and Attribute values you want to interact with before you can start configuring your BMC Atrium API calls.

Of course unless you mumble PowerShell in your sleep you will also need to look up the actual syntax of the API commandlets before you can start.

The Integration Module for BMC Atrium provides a set of ready built activities for integrating with BMC Atrium from within Azure Automation and the Kelverion Runbook Studio.

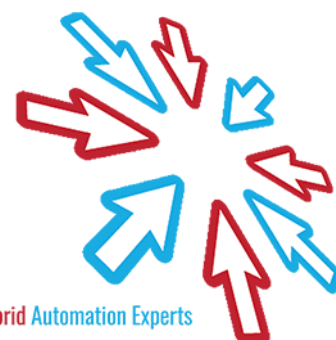
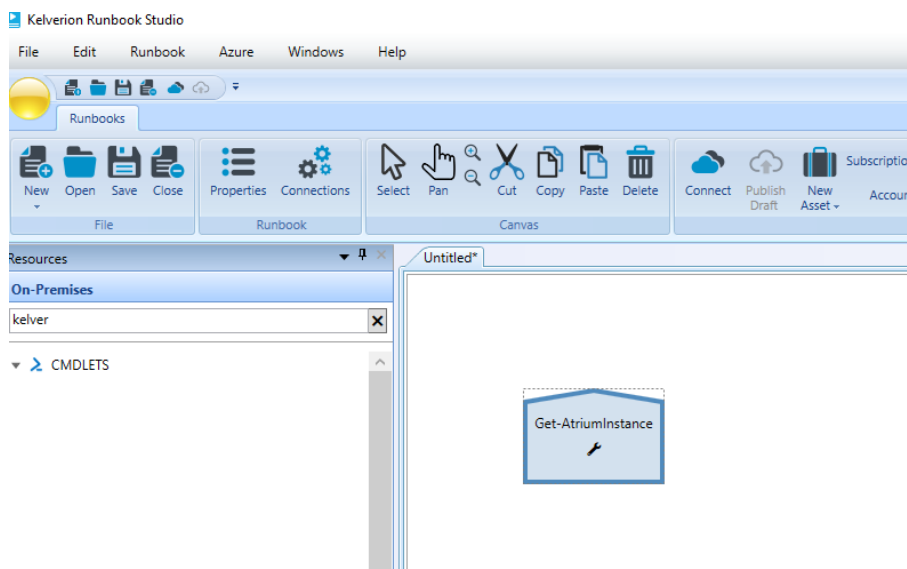
These are forms driven activities which allow you to define interactions with BMC Atrium without having to write any PowerShell code.

When the Integration Module is used from within the Runbook Studio you also get the benefit of the Smart Discovery. You create a Smart Connection to a BMC Atrium instance and the IM will query BMC Atrium to find out all the Datasets in that BMC Atrium instance and presents you a list of the available CI Classes. You then select a Class and the IM will automatically configure its self to show all the Fields in the Class as a Parameter for the BMC Atrium command and the preconfigured value for the Fields where appropriate.

This means you don't need to be an expert on the BMC Atrium configuration before you can interact with it because the IM will tell you how the system is configured and then you just configure the activity to achieve the BMC Atrium interaction you require.

For example if you want to get a CI from BMC Atrium you often want to limit the CIs selected to those where the contents of a field equals a given value. In the IM activity for Get-AtriumInstance there is a filter option and the IM immediately presents you with a list of the fields in the Class you selected to set your filter criteria against.

When done from within the Runbook Studio this is all achieved without writing any PowerShell script.



Cloud & Hybrid Automation Experts

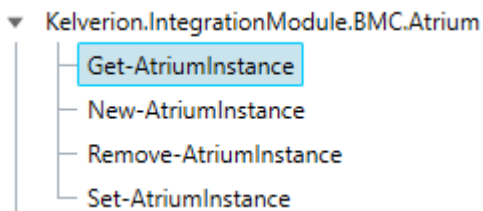
Kelverion

The Key capabilities added to your Runbook Studio solution include:

- Automatically builds and executes the necessary BMC Atrium interactions without the user having to write or understand PowerShell
- Simplifies Runbook design by automatically mapping CI Class fields to input properties, filters and published data items
- Prevents errors by controlling access to read-only fields, enforcing mandatory inputs and by providing value browsers for common data types.
- Smart Connections establish a reusable link between the Runbook Studio and a specific BMC Atrium instance. You can create as many Smart Connections as you require, specifying links to multiple BMC Atrium instances. You can also create multiple Smart Connections to the same BMC Atrium instance to allow for differences in security privileges for different user accounts.

IM FOR BMC ATRIUM COMMADLETS

Get-AtriumInstance	Retrieves CI instances from the CMDB
New-AtriumInstance	Inserts a new CI instance in CMDB
Remove-AtriumInstance	Removes CI instances from the CMDB
Set-AtriumInstance	Updates the values of one or more attributes in specified CI instances



For more information on the Kelverion Integration Module for BMC Atrium please contact info@kelverion.com.

Kelverion are a Microsoft System Center and Cloud Partner who offer Integration Packs and Tools to enhance System Center Orchestrator and Azure Automation and deliver System Center implementation services.

Find out more at <http://www.kelverion.com>



Cloud & Hybrid Automation Experts