

Kelverion

Integration Pack for Microsoft System Center 2016

More Automation for System Center 2016

The Integration Pack for Microsoft System Center 2016 is compliant with Microsoft System Center 2016 Orchestrator.

Microsoft provides Orchestrator Integration Packs for their System Center 2016 toolset, however, these Integration Packs lack certain capabilities that many Orchestrator users desperately need to automate their System Center 2016 deployments.

Therefore Kelverion have released this Integration Pack which adds tasks to the existing Microsoft System Center 2016 Integration Pack capabilities.

This release covers the following products:

- Configuration Manager 2016
- Operations Manager 2016

The Integration Pack contains an Activity for SCCM and SCOM. Each Activity offers several product specific, selectable tasks. Each task has its own set of parameters and filters.

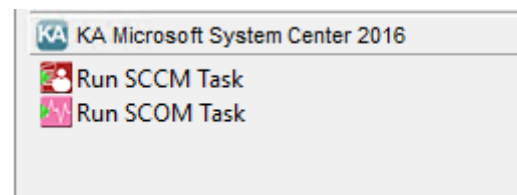
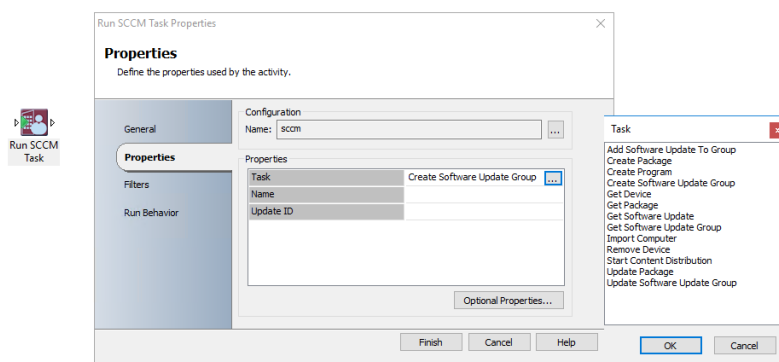
IP FOR SYSTEM CENTER ACTIVITIES

SCCM

- Add Software Update To Group
- Create Package
- Create Program
- Create Software Update Group
- Get Device
- Get Package
- Get Site System Server
- Get Software Update
- Get Software Update Group
- Import Computer
- Remove Device
- Start Content Distribution
- Update Package
- Update Software Update Group

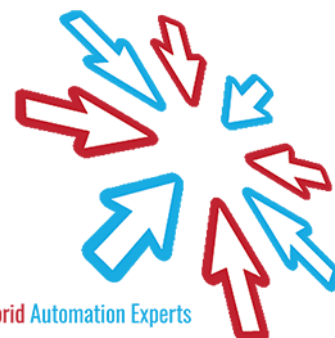
SCOM

- Get Management Pack
- Get Rule
- Get Monitor
- Get Class
- Get Class Instance
- Get Task
- Get Task Result
- Install Agent
- Reset Monitoring State
- Start Task



Kelverion are a Microsoft System Center and Cloud Partner who offer Integration Packs and Tools to enhance System Center Orchestrator and Azure Automation and deliver implementation services.

Find out more at <http://www.kelverion.com>



Cloud & Hybrid Automation Experts