

Kelverion

IP for VMware vSphere

Orchestrator Integration for vSphere version 6.7, 7.0 and 8.0

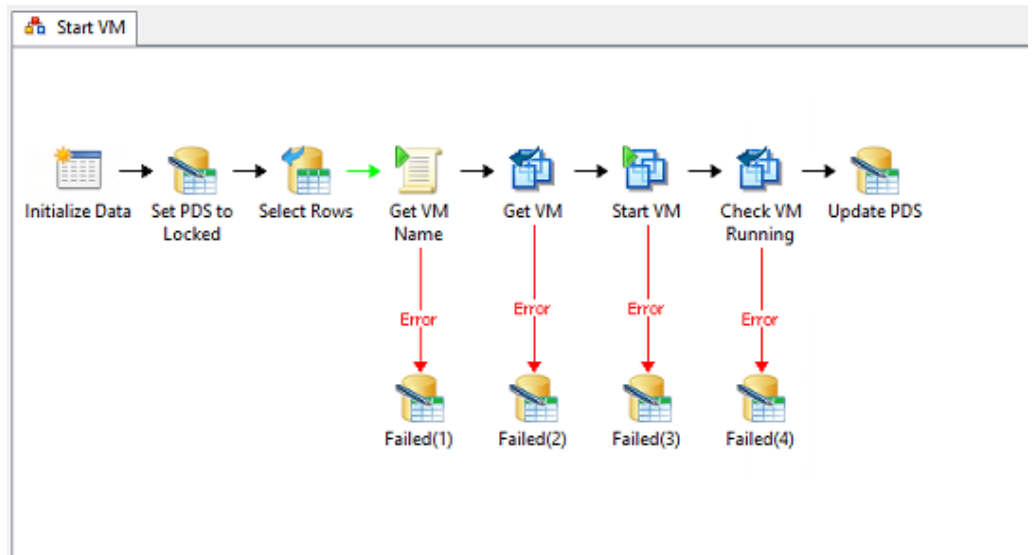
Until now for companies looking to automate vSphere 6.7, 7.0 and 8.0 with System Center Orchestrator had only one option Power CLI.

Although integration in vSphere using Power CLI was possible, the commands were complex to execute from within Orchestrator.

The VMware vSphere Integration Pack from Kelverion simplifies the whole integration and automation challenge of vSphere from within Orchestrator by providing a set of robust forms Integration Pack Activities.

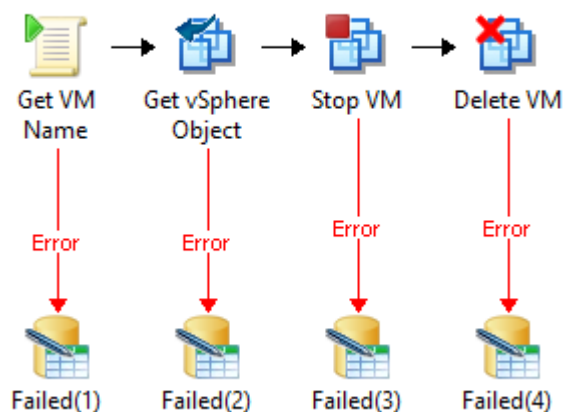
The Integration Pack for VMware vSphere is a compliant integration for the Microsoft System Center Orchestrator IT Process Automation Solutions.

The Integration Pack enables pre-defined integration and automation capabilities associated with provisioning and managing VMware vSphere Virtual Machines.



The Integration Pack delivers activities to automate IT Functions such as:

Delete VM



Automated Provisioning - Automate the creation of resources in vSphere directly from Service Requests or automated resource scaling.

Delete VM

Retire Virtual Machines to free up resources and reclaim licenses for re-use.

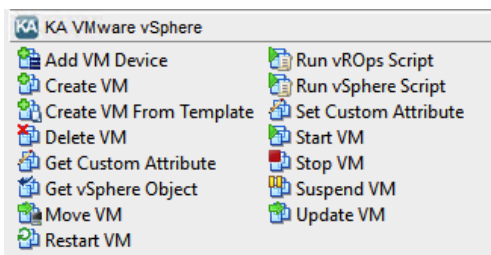


Cloud & Hybrid Automation Experts

Kelverion

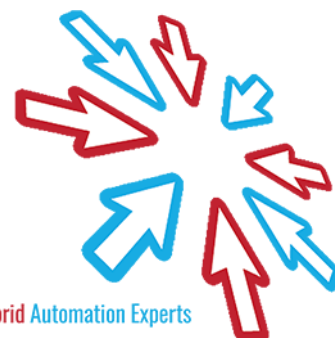
IP FOR VMWARE vSPHERE ACTIVITIES

Add VM Device	Add new device to an existing VM. Device types are; CD / DVD Drive, Disk Drive, NIC
Create VM	Configure and create a new VM
Create VM From Template	Create a new VM based on an existing VM template
Delete VM	Permanently delete a VM from a Datastore or to remove a VM from the inventory
Get vSphere Object	Retrieve information about various objects in vSphere. Object types supported are; Cluster Compute Resource, Compute Resource, Datacenter, Datastore, Folder, Guest OS, Host, Network, NIC Option, Resource Pool, VM, VM Device, VM Guest Info and VM Status
Move VM	Move a VM to another Folder, resource pool, datastore, host or datacenter.
Restart VM	Restart a VM. Allows the options to reboot the Guest OS (soft restart) or VM power will be reset (hard restart)
Run vSphere Script	Run a PowerCLI script in your vSphere environment
Run vROps Script	Run a PowerCLI script in your vRealize Operation Manager environment
Set Custom Attribute	Set a custom attribute value for a VM or host.
Start VM	Start a stopped or suspended VM
Stop VM	Stop a running or suspended VM
Suspend VM	Suspend a running VM
Update VM	Update properties or device properties of an existing VM. Technology areas which can be updated are; CD/DVD Drive, CPU, Disk Drive, Memory, NIC, VM Properties



Kelverion are an established Independent Software Vendor specialising in IT Automation solutions. Kelverion provides software and specialist consultancy solutions for Microsoft Azure and the Microsoft System Center suite.

Find out more at <http://www.kelverion.com>



Cloud & Hybrid Automation Experts