

# Kelverion

## Automated Patching

### Automated Patching for Windows and Linux

The process of patching servers is a hugely complex and time-consuming process for IT departments. Many companies patch everything manually and even for those who have patch tooling, this typically only covers Windows or Linux not both, so they still have manual tasks to do.

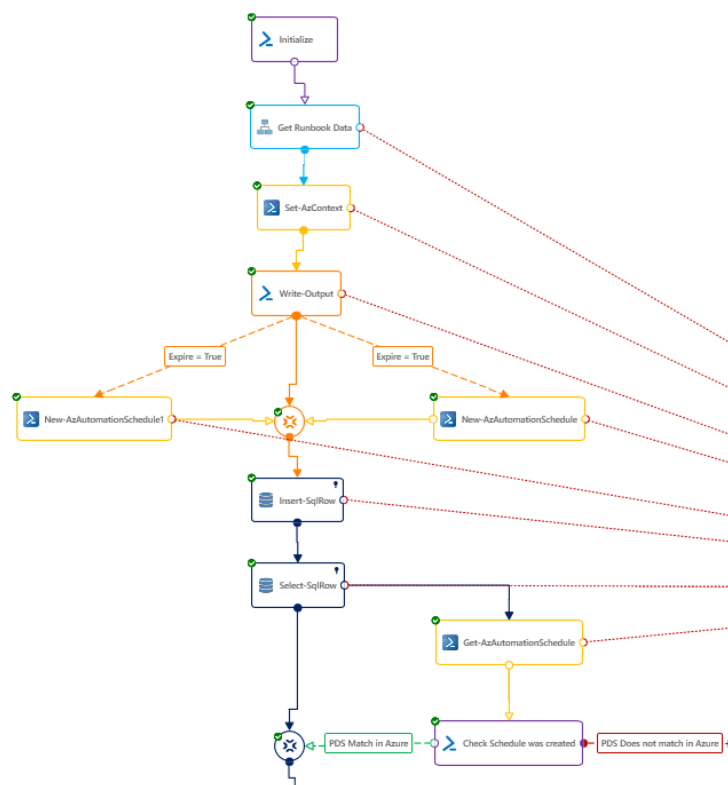
Also monthly patch deployments are often an unreliable process, which leaves companies with huge security and compliance issues.

Therefore, companies are increasingly looking for Tooling and Automation to improve supportability and compliance, along with the self-service facilities whilst maintaining security controls. To meet this need, Kelverion have built the Automated Patching Solution.

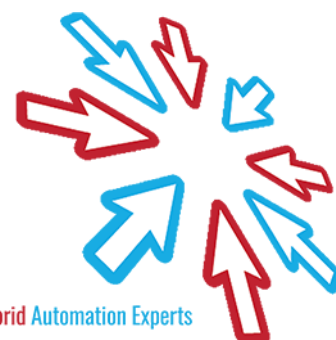
The application leverages the Microsoft Azure Update Management service to provide a SaaS patching platform for both Windows and Linux machines, which is then wrapped with a Self-Service Portal and automation. This minimises the administrative overhead and allows patching tasks to be delegated to other users; ensuring there is no compromise to an organisation's security or integrity of configuration.

All the data that drives the requests in the automation portal is discovered and maintained by the Azure Automation runbooks, so the automation portal is always in sync with the Patching tooling.

The Runbooks have been written using the Runbook Studio authoring application and leverage the integration and smart discovery capabilities provided by the Integration Module for SQL Server. These Integration Modules are available in the PowerShell Gallery.



Name	Description
Create Patching Schedule	Creates an Azure Schedule for Update Management
Create Patching Deployment	Creates a patching deployment
Enable or Disable Patching Schedule	Enable or Disable a patching schedule
Create KB \ Package List	Creates a list of KBs \ Packages that can be used as an Include or Exclude list
Deploy Update Management Clients	Deploys clients to a chosen Resource Group
Add Devices to Patching Schedule	Add devices to a Patching Schedule Group
Remove Patching Deployment	Removes a patching deployment



Cloud & Hybrid Automation Experts

# Kelverion

The application provides the following key functions:

- SaaS Patching tool which can deploy patches to Servers with Windows and Linux Operating Systems
- Automated Administration to:
  - Deploy clients
  - Create patch schedules
  - Deploy updates
- Self-Service Interface for Server owners to define which patch schedule their Server should be included in
- Alerts on Patch deployment failures
- Patching compliance reports

Supported Operating System Vendors Include:

- Microsoft Windows Server
- CentOS
- Red Hat Enterprise
- SUSE Linux Enterprise Server
- Ubuntu

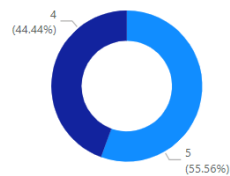
Full version support can be found at:

<https://docs.microsoft.com/en-us/azure/automation/update-management/operating-system-requirements>

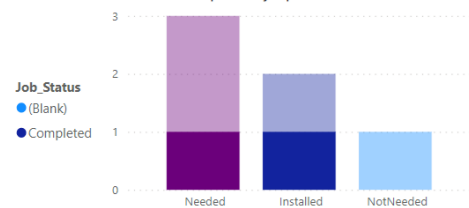
## Automated Patching – Update Management

Computer	PatchGroup
UB-1804-01	PATCH_3rd_Tuesday_at_1100_Linux
UB-1804-04	PATCH_3rd_Tuesday_at_1100_Linux
demo.kuklab.kelverion.local	PATCH_3rd_Tuesday_at_1100_Windows
Test-SRV2012R2.kuklab.kelverion.local	PATCH_3rd_Tuesday_at_1100_Windows

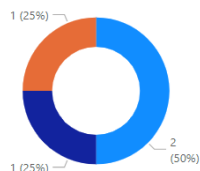
Count of Computer by Job\_Status



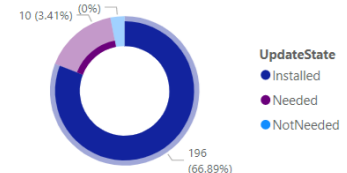
Count of Computer by UpdateState



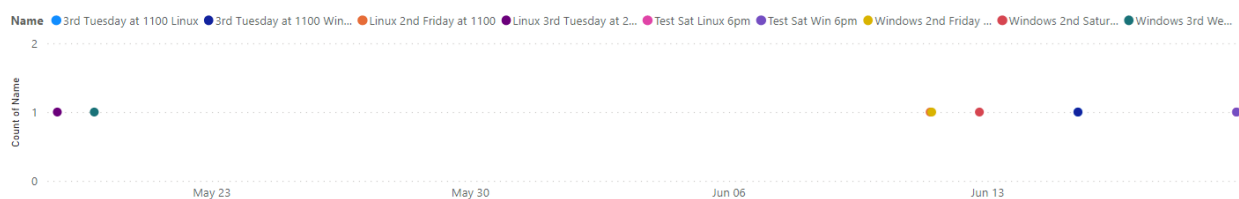
Count of Job\_Status by Schedule



Count of Required Updates



## Next Schedule Run



## APPLICATION IMPLEMENTATION

The application is available on it's own or as a Kelverion lead installation and configuration. In this option you provide Kelverion with remote access to your environment and then a Kelverion consultant will lead the installation and configuration of the application into your environment and you will provide the subject matter expertise around your Server estate.

The application implementation service is valid for 3 months from application purchase.



Cloud & Hybrid Automation Experts

# Kelverion

## SCOPE OF THE KELVERION JUMP START

The scope of the Kelverion led implementation is defined as:

1. Deployment into a single Azure Automation Account only
2. Integration of application with one Azure Subscription
3. Integration with a single Log Analytics Workspace
3. Configuration of the integration to the Kelverion Automation Portal as an Azure Web App
4. Supported deployment of Update Management Agent on to up to 3 Servers.
5. An Approved User will enter the Kelverion Automation Portal and request the provision of a New Patch Schedule, thus creating a new Request in the Portal
6. Azure Automation to detect the request and execute the appropriate Create Schedule Runbook.
7. Azure Automation to mark Request as complete when Patch Schedule Created
8. An Approved User will enter the Kelverion Automation Portal and request the deployment of Patches to an existing Patch Schedule, thus creating a new Request in the Portal
9. Azure Automation to detect the request and execute the appropriate Patch Deployment Runbook.
10. Azure Automation to mark Request as complete when Patch Deployment Completed

You are responsible for:

- Configuring the Azure Subscription, Resource Groups, Automation Account, Log Analytics Workspace and Active Directory Domain
- Granting Kelverion access to your Azure Subscription
- Network configuration to allow Servers to communicate with Azure Update Management Service

---

**K**elverion are an established Independent Software Vendor specialising in IT Automation solutions. Kelverion provides software and specialist consultancy solutions for Microsoft Azure and the Microsoft System Center suite.

Find out more at <http://www.kelverion.com>

---



Cloud & Hybrid Automation Experts